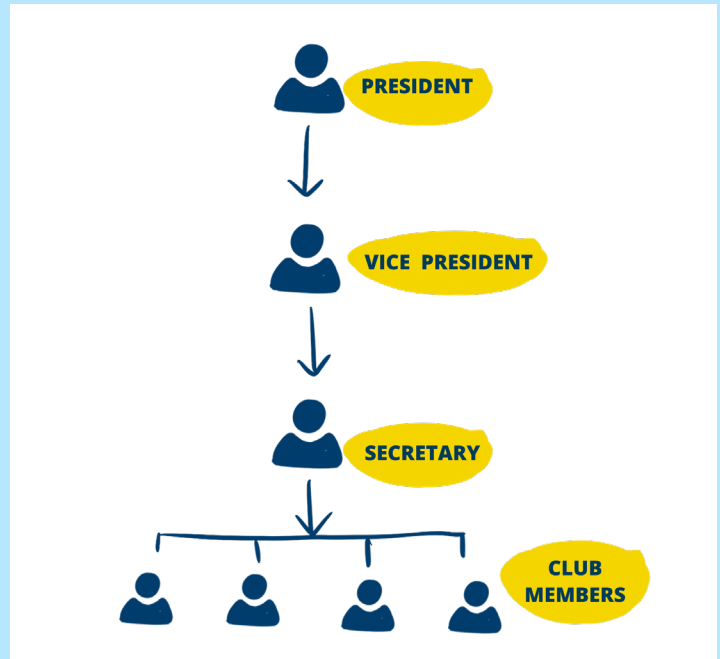


Choosing an Effective Leadership Model

Hierarchy-based Leadership:

Hierarchy-based Leadership often consists of a President (or Co-Presidents), Vice President, Secretary, Treasurer, Senior Advisor, and other fixed roles. Hierarchical structures designate a clear chain of responsibility and are often used in boards or councils.



Board or Team-based Leadership:

Team-based Leadership consists of a “board” or “team” of people who lead the club. Each member has a defined leadership role that covers major areas of responsibility (Examples: Facilitator, Outreach & Events Coordinator, Advocacy Coordinator, etc.). The leadership roles are well-defined, and the board or team makes decisions collectively and reports to the whole group instead of a President. This model offers a balance - more structured than a Distributed Model, but less structured than a Hierarchical Model.

